



TURTLE RESEARCH & CONSERVATION EFFORT IN INDONESIA

Mirza D. Kusrini
Awal Riyanto
Mistar
Joko Gunoro
Munawar Kholis
Ani Mardiasuti

NATIONAL SPECIES CONSERVATION STRATEGY WORKSHOP: 2007

- Herpetofauna
- Attendee:
 - Irvan Sidik; Helen Kurniati; Mumpuni (MZB-LIPI)
 - Djoko T. Iskandar (ITB)
 - George Saputra (Irata)
 - Mirza D. Kusrini, M. Yazid, Adininggar U. Ulhasanah, Ani Mardiasuti (IPB)
- Result
 - Very High Priority: 16 species
 - 6 species of turtle
 - High Priority: 6 species
 - 2 species of turtle



Ministry of Forestry Regulation
PERATURAN MENTERI KEHUTANAN
NOMOR : P. 57/Menhut-II/2008
TENTANG ARAHAN STRATEGIS
KONSERVASI SPESIES NASIONAL
2008 – 2018
Date 23 September 2008

Key Conservation Species

Species	English Name	Status
Very High Priority		
<i>Chelodina mccordi</i>	Rote Snake-Necked Turtle	CR, CITES appendix II, No quota except by breeding
<i>Chitra chitra</i>	Striped Narrow-headed Softshell Turtle	CR, CITES appendix II
<i>Leucocephalon yuwonoi</i>	Sulawesi Forest Turtle	CR, CITES appendix II
<i>Indotestudo forstenii</i>	Sulawesi Tortoise	EN, CITES appendix II
<i>Callagur borneoensis</i>	Painted Batagur	CR, Non appendix CITES
<i>Batagur baska</i>	River Terrapin	CR, CTES Appendix I, protected by Gol, No quota
High Priority		
<i>Chelodina gunaleni</i>	Gunalen's Snake-necked Turtle	Not assessed
<i>Chelodina reimanni</i>	Reimann's Snake-necked Turtle	LR/NT

Reason for Listing

- Low research focus on species
- Highly Traded
- Endemic
- Population might decrease in the future



Other species in focus

- ***Amyda cartilagenea***
 - Related to trade (Apekli in partnership with university & MZB)
 - Research in Cirebon by Faculty of Fisheries & Marine Science (IPB) in partnership with West Java's Fisheries Office
- ***Myuchelys novaeguineae***
 - Captive breeding by Mumpuni (MZB) --- F1 (3 clutch/year, each 8-9 eggs)
- ***Cuora amboinensis***
 - Biology and Trade Research (TRAFFIC and postgraduate students)
- ***Heosemys spinosa***
 - Captive breeding by Aceng Ruyani (University of Bengkulu)
- ***Carettochelys insculpta***
 - Research by Richard Triantoro (Forestry Research Office-Papua)

Key Conservation Partners

- Ministry of Forestry
- Ministry of Marine & Fisheries Affair
- LIPI (Museum Zoologicum Bogoriense)
- University (Bogor Agriculture Institute, University of Bengkulu)
- NGO (Traffic, WCS, Sukacita Foundation, etc.)
- Traders Association (APEKLI, IRATA)

Past Conservation Programs

- Release of *Chelodina mccordi* in Rote, 2009 (Gol)
- Field survey of *Batagur borneoensis* in Sumatera, 2009-2010 (Yayasan Sukacita & WCS)
- Field survey of *Indotestudo forstenii* in Central Sulawesi, 2007 (MZB-Awal Riyanto)
- Field survey *Amyda cartilagenea* in Cirebon (2007)



Release of *C. mccordi*

- High price of *C. mccordi* push capture of wild turtle.
- No export permit given for wild capture except from breeding
- PT Alam Nusa Jayatama (Danny Gunalen) - has breeding license
- Breeding of *Chelodina mccordi* started in 2001.



Release of *C. mccordi*

- Number of turtle released: 50
- Challenge:
 - No written report on the release program
 - No clear monitoring program after release
 - Weak communication between researcher and management authority , scientific authority involvement is low



Field survey of *Batagur borneoensis* in Sumatera

- Established the potential source site (PSS) of Painted terrapin in northern Sumatra. 4 of 6 surveyed estuaries historically occupied, 3 breeding site identified.
- Northern Sumatra's population breeding season have identified.
- Human Threats identified : Local egg consumption, sandbank blocked fishnet, female capture. Limited sandbank → high density of nest → high concentrated of threats.
- Needed action: Seasonal breeding season protection to PSS, awareness, population trends monitoring.

Batagur borneoensis Nesting patrol in Aceh Tamiang
(Oct 2009 – Feb 2010)

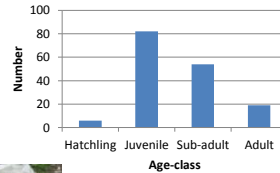


Field survey of *Indotestudo forstenii* in Central Sulawesi

- Identified Sologgi hill area as a potential site and recommended to be a conservation area
- Identified route of trade and utilization in Sulawesi
- Potential in failed of conservation program:
 - Low control and monitoring in the trade on grass root level
 - Low public awareness
- Actions needed:
 - More effort to move multi stake holders to set up Sologgi hill as a conservation area
 - Increasing effort on captive breeding program
 - Sulawesi endemic turtle advocation program to increase public awareness

The “sacred” turtle of Cirebon

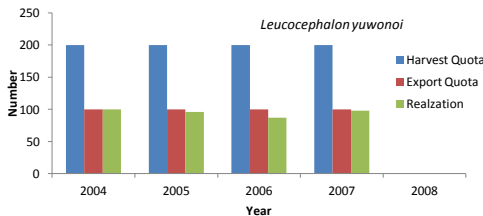
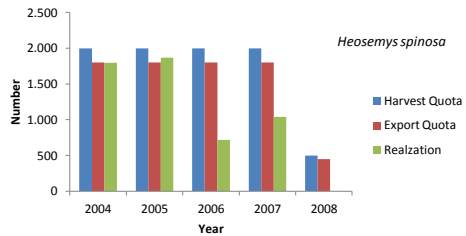
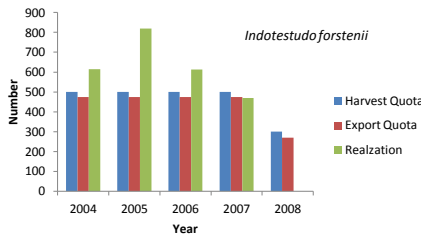
- Brought by “ulama” more than 100 yrs ago, only persist in Belawa Village
- Not breed but left alone in traditional fish pond
- In 2007, population considered healthy
- Species: *Amyda cartilagenea*
- Challenge:
 - >100 turtle died by infection in March 2010
 - No data if population persists



Chelonian Trade

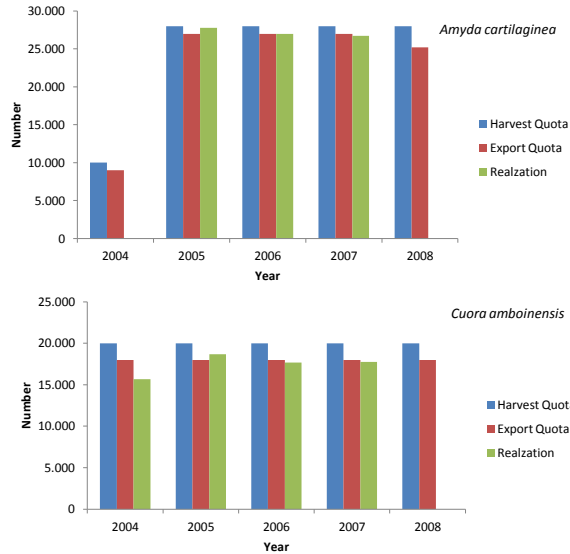
Number of species traded (based on quota):

- 12 species of Appendix II CITES
- 9 species of Non Appendix CITES



Chelonian Trade

- Number of trade is high for species traded not only for pet but mostly for consumption
- Two species is in focus: *Amyda cartilaginea* and *Cuora amboinensis*
- Research on both species is already carried out or in progress
- For *C. amboinensis* see report by Schoppe (Traffic)



Current Programs



- Trade and harvest of *Amyda cartilaginea*
 - Assisted by Asosiasi Pengusaha Kura-kura dan Labi-labi Konsumsi Indonesia (APEKLI)

No.	Survey location	Year of Survey	Institution	Methods
1.	East Kalimantan	2009	Faculty of Forestry IPB	Field assessment & interview
2.	South Sumatera	2010	MZB/ LIPI researchers	Field assessment & interview
3.	Jambi	2010	MZB/ LIPI researchers	Field assessment & interview
4.	Riau	2010	MZB/ LIPI researchers	Field assessment & interview
5.	West Kalimantan	2010	Postgraduate student IPB	Field assessment & interview
6.	West Sumatera	2011	MZB/LIPI researchers	Field assessment & interview

Recommendations for Turtle Conservation Action

(based on Permenhut P. 57/Menhut-II/2008)

- Research:
 - All biology aspect
 - Increase capacity of researcher
- Protection:
 - For *C. mccordi* : upgrade national protection status
 - Habitat restoration
 - Protection of habitat outside protection area
 - Ex-situ and captive breeding, restocking for some species
 - Increase public awareness

Conservation Action

- Utilization:
 - study on sustainable use
 - Quota establishment



Terimakasih

THANK YOU